



MICKLEFIELD HALL

THE PERFECT COUNTRY VENUE

Events Brochure 2023 - 2024



MICKLEFIELD HALL

THE PERFECT COUNTRY VENUE



An exquisite venue, just 25 miles from Central London, Micklefield Hall is the ideal setting for your special celebration or corporate event.

Micklefield Hall is set in 350 acres of rolling Hertfordshire countryside. Managed and run by the Rankin family who live in the manor house, ensures that this elegant country venue has a wonderful family feel. Micklefield conjures up a mix of total privacy, exclusivity and luxury which, when combined with the a truly magical setting, makes it the perfect venue.

The Great Barn looks out over magnificent gardens with distant views and enjoys a convenient location just two miles from the Chorleywood exit (Jct 18) of the M25. Every event at Micklefield Hall is tailor-made to suit your requirements. The Great Barn and the extensive gardens are yours exclusively for the day.



MICKLEFIELD HALL

THE PERFECT COUNTRY VENUE

Micklefield Hall has hosted a variety of events. Whatever your special event, our in house event managers can work with you to mark that special occasion. Contact us today to talk through your requirements.

- Charity fundraisers
- Private memorials
- Product launches
- Press conference
- Private concerts
- Bar Mitzvah
- Engagement parties
- Confidential meetings
- Birthday parties
- Themed parties
- Baby showers
- Annual general meetings
- Team building away days
- Anniversary parties
- Private dining experiences





THE GREAT BARN



Our beautifully restored 16th C tithe barn, with it's vaulted ceilings, oak floor and exposed beams provides a stunning space for parties, dinners and presentations.

We have a fixed stage. optional dancefloor and seating for up to 200 guests cabaret style or 120 guests banqueting style.

Our barn has some smart features including two audio systems, a lighting system in the ceiling that can be moved to highlight your tables or displays, air conditioning and a viewing gallery high up in the roof of the barn.





EVENTS AT MICKLEFIELD HALL

All events at Micklefield take place in the The Great Barn. There are several outdoor spaces that are also available to use and are included in the venue fee. Our venue is totally exclusive and our venue fee includes our specialist Event Manager to help you plan and run your event.

Our venue fees (excluding VAT) for up to 200 guests in 2023 & 2024 are:

	May - Sep	Apr & Oct	Jan, Feb, Mar Nov & Dec
Saturday & Sunday	£12,750	£11,750	£9,750
Friday	£11,750	£10,750	£8,750
Thursday	£10,000	£9,000	£7,500
Monday - Wednesday	£8,000	£7,500	£6,500
Bank holidays	£11,750	£10,750	£9,750

(24th December to 1st January and Easter excluded)

The Great Barn and gardens are made available for the exclusive use of the client. Included within the fee are the facilities such as lighting, toilets, catering area, tables, chairs, dance floor, stage and sound system.

For presentations and live streamed concerts, AV companies are required to provide the appropriate technology and are not included in the venue fee.



OUR CATERING PARTNER

k.alm
KITCHEN

An introduction to Kalm Kitchen



Founded in 2008 by James and Jen Middlehurst, Kalm Kitchen have been planning and delivering events at Micklefield Hall for 14 years and are highly respected caterers.

James, an outstanding chef, trained at the Tante Marie Culinary Academy and, with an eye for style, Jen provides the creative flair and passion that's at the heart of Kalm Kitchen. A winning combination!

You will be invited to a Tasting Experience, usually at Micklefield Hall. This is always an enjoyable evening and an opportunity to sample a selection of dishes to help you plan your menu.

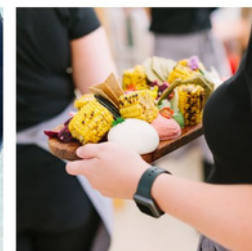
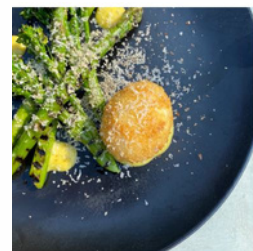


Menus start from £72+vat (2024) and £75+vat (2025 & 2026) per person for a minimum of 80 guests and the price includes:

A selection of six canapes followed by a three course meal,
Chefs, front of house manager and team to include wine waiters for the reception and meal,
Fine white bone china, table cutlery and glassware,
White table linen,
Planning meetings to discuss your event in detail,
Tasting evening to help you decide on your menu,
A range of dietary options for each course,
A selection of fresh, rustic breads,
Coffee, tea and petit fours,
Table stands and water jugs for each table,

Once you have booked your event with Micklefield Hall, please contact Kalm Kitchen who will provide you with menu options, talk you through your ideas and put together a bespoke quotation.

Please email Guy Andrews at guy@kalmkitchen.co.uk
or call 01483 813 360





Kalm Kitchen's Menu

For all day events where your guests require additional meals or different service styles, Kalm are on hand to offer plenty of alternatives.

BREAKFAST OPTION

Breakfast Station: selection of pastries, granola and fruit skewers £17 +VAT pp

Tea & Coffee Station: freshly brewed tea and coffee served with biscuits £14.50 + VAT pp



LUNCH OPTIONS

Grab & Go Lunch Station £23+VAT pp

Selection of 3 cold baguettes, crisps and salted caramel brownie bites to finish

Tapas Inspired Grazing Station Buffet £32+VAT pp

Selection of cured meats, prawns, Spanish tortilla, stuffed peppers, goats cheese tart, olives, Mediterranean breads, & crema catalana

BBQ Lunch £27.50 +VAT pp

Apricot & sage beef burgers, Cumberland sausages with buns, halloumi skewers, tomato salad and a crispy garden salad served with a selection of condiments

3 Course Seated Lunch £52+VAT pp

Starters : Ham hock and mustard cress salad / Tomato and thyme tart tatin
Mains : Pork belly with creamy garlic mash / Onion & goats cheese tart
Dessert : Lemon tart with raspberry sorbet

DINNER OPTIONS

Light Evening Reception £42+VAT pp

Canapes : Chicken wrapped in Parma ham, roast beef mini Yorkshire puddings, mini Peking duck pancakes, smoked salmon on brioche, goats cheese and shallot tatin, chard and brie mini muffins

Bowl food : Seasonal risotto, baby Cumberland sausages with mash, pollock with chips and minted pea puree

BBQ Dinner £64.50+VAT pp

Canapes : Mini Peking duck pancakes, tempura prawns, halloumi skewers

Starter : Goats cheese and fig salad

Mains : Saffron spiced chicken, jerk spiced pork loin, roasted new potatoes, roasted Mediterranean vegetables, crisp garden salad

Dessert: Eton mess with summer berries

3 Course Seated Evening Meal £60+VAT pp

Starter : Tomato, balsamic vinegar, avocado puree, marinated feta, basil crumb and purple basil cress

Mains : Balsamic braised beef cheek with buttery mash or Milanese risotto

Dessert : Chocolate brownie with honeycomb ice cream



OUR ALTERNATIVE CATERING PARTNERS

If you require specialised caterers, you must use one from our approved list and the costs will vary. Different kitchen fees will apply for both Asian and Kosher caterers, listed in our terms and conditions.



RAGASAAN

020 8839 0880 - Arun / Nina

sales@ragasaan.com

www.ragasaan.com

TONY
PAGE

TONY PAGE

0208 830 4000

charlotte@tonypage.com

www.tonypage.com

PHILIP SMALL
CATERERS AND EVENT PLANNERS

PHILIP SMALL

0208 200 5666

info@philipsmall.co.uk

www.philipsmall.co.uk

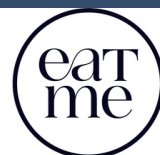
JAMES A. ZIMMER

JAMES A ZIMMER

0208 830 8330

events@jameszimmer.co.uk

www.jameszimmer.co.uk



BENJY LEVEY

020 3772 0811

benjy@eatmeevents.com

www.eatmeevents.com



FEAST BY ED SHAERF

0161 834 8844

hello@kosherfeast.com

www.kosherfeast.com



DRINKS FOR YOUR RECEPTION AND MEAL

There are two options you can select from:

1. An unlimited drinks package
This package includes the drinks reception (sparkling), wines with the meal (red, white, rosé) and a toast drink. Soft drinks and beer alternatives can be made available throughout this package
£30+VAT per person
If you would like to upgrade from Prosecco/Cremant to ~Bluebell/Castelnau Champagne there will be an additional charge of £5+ VAT per person
~Moët Champagne + £15+vat pp
~Moët Rose Champagne + £20+vat pp

2. Pay on Consumption
Select the sparkling, beer, softs and wines you would like and we will chill and have them ready to serve at your reception. Payment is then due at the end of your event, only for what has been consumed.

After your meal the Mickelfield Hall bar is open where we serve the usual range of alcoholic and non alcoholic drinks. We can hold a tab behind the bar or operate a pay bar.

You also have the option to hire our Pimms & Ginbar or Cocktail bar.

Price	<u>Sparkling & Champagne</u>	<u>Region</u>
£17.00	Prosecco DOC, Serenello Extra Dry (V)	Italy 11%
£17.50	Prosecco Rose DOC Serenello	Italy 11%
£21.00	Cremont de Bourgogne, Leonce Bocquet (V)	France 12.5%
£27.00	Bluebell Hindleap, Classic Cuvee (V)	England 11.5%
£32.00	Champagne Castelnau Brut	Champagne 12%
£40.00	Moët & Chandon Brut Impérial	Champagne 12%
£46.00	Moët & Chandon Brut Rose Impérial	Champagne 12%
	<u>White Wine</u>	<u>Region</u>
£14.00	Jardin de Gascogne Blanc 'Colombard Ugni Blanc Cotes de Gascogne' (V)	France 11%
£14.50	I Castelli Pinot Grigio, Delle Venezie DOC (Ve)	Italy 12%
£18.00	Gavi di Gavi Il Portino (V)	Italy 12.5%
£14.00	Central Monte Sauvignon Blanc (V)	Chile 13%
£16.00	Lourerio, Vinho Verde, AB Valley Amarente (V)	Portugal 11.5%
£16.50	Chardonnay Sur Lie, 'Bon Vallon', De Wetshof Estate, Robertson	S. Africa 13.5%
£16.50	Sauvignon Blanc, Wairau River Wines	New Zealand 13%
£17.50	Albarino Black Label, Wairau River Wines	Marlborough 14%
	<u>Red Wine</u>	<u>Region</u>
£15.00	Tempus Two Merlot	Australia 12%
£15.00	Carignan, Vieilles Vignes, Roche de Belanne (V)	France 12.5%
£16.00	Primitivo Maestro Pulgia IGT (Ve)	Italy 13.5%
£18.50	Pinot Noir, Wairau River Malborough (V)	N Zealand 13%
£18.50	Familia Schroeder 'Saurus' Patagonia Select Malbec (V)	Argentina 14%
£14.50	The Impressionist 'Cosmic Cloud' Shiraz	South Africa 12.5%
£18.00	Vina Cerrada Rioja Reserva	Spain 13%
£14.50	Vignamadre Dega Bio Montepulciano D'Abuzzo	Italy 13%
	<u>Rosé Wine</u>	<u>Region</u>
£19.50	Ashdown Rosé, Bluebell Vineyards (V)	Sussex 11.5%
£13.00	Cotes de Gascogne Rosé, Jardins de Gascogne, Plaimont (V)	France 12%
£16.50	Coteaux d'Aix en Provence Rosé, Essenciel, Chateau de Paradis (V)	France 12.5%
	<u>Other options for drinks reception</u>	
	Peroni/Corona £5, Doombar/Old Speckled Hen/Bulmers/Koppaberg £6/bottle	
	Jugs elderflower cordial/ orange juice £6/jug	

Please note, all prices listed are excluding VAT & are subject to any further duty increase or extreme currency fluctuations.
E&O.E September 2023



THE MICKLEFIELD BAR

SOFT DRINKS

Coke, Diet Coke, Lemonade, Fruit Juice, Soda Water,
Sparkling water & Elderflower cordial £2/glass
Ginger Beer/Ale, Tonic, Light Tonic £3/glass
Punchy non-alcoholic cocktails & Red Bull £3/can

BOTTLED BEER/ALE £5

Peroni, Budweiser, Corona £5/bottle
Guinness, Old Speckled Hen, DoomBar £6/bottle
Koppaberg, Bulmers £6/bottle
Becks blue non alcoholic beer £4/bottle

WINE

Glass of wine sml £5 / lrg £7 / Bottle £18
Glass of Prosecco £5 / Bottle £18
Glass of Champagne £8 / Bottle £32

SPIRITS

Classic spirit single shot £3

Classic spirit double shot £5

Gordons, Bombay Sapphire, Seedlip Garden, Smirnoff,
Captain Morgan, Jameson, Jonnie Walker, Jack Daniels,
Jägermeister, Disaronno, Baileys, Tequila, Sambuca, Archers,
Tequila Rose, Pimms, Southern Comfort, Bacardi, Malibu,

Premium spirits single shot £4

Premium spirit double shot £6

Tanqueray, Hendricks, Wessex, Grey Goose, Courvoisier, Bulleit
Frontier, Glenmorangie

Jägerbombs £4

Vodka & Red Bull £6



Chandon Garden Spritz

A lovely addition to your drinks reception. A unique blend made with natural extracts from orange peels, herbs and spices. A delicious top-quality dry cuvée, made with Chardonnay, Pinot Noir and Semillon grapes, finished with a sprig of rosemary and dried orange. Add to your drinks package for £2.50+vat per person. On consumption, the Garden Spritz is £23.50+vat per bottle.



Micklefield Hall & Wessex Gin Bar



As a fun addition to your evening bar at Micklefield Hall, why not hire our Wessex gin bar? Serving the delectable Wessex gin range coupled with fresh Fever Tree tonic or go wild and choose from our Micklefield gin cocktails! You can hire our gin bar for only £150+VAT.
Then just pay by the glass!



Wessex gin & tonic £6.00

Five fabulous flavours
to choose from

- ~Alfred The Great
- ~Sicilian Lemon & Ginger
- ~Wyvern's Classic
- ~Rhubarb & Ginger
- ~Saxon Garden





Micklefield Hall Cocktail Bar

Choose your cocktails from our menu of six. Each cocktail is expertly blended by Edmunds and shaken and poured by our team at our stylish bar. Hire this option for your evening bar for £150+VAT then drinks are paid for on consumption.

All cocktails are £8 each

Lychee Martini



Negroni



Espresso Martini



Old Fashioned

Mojito



Passionfruit Martini





THE LITTLE BARN

Our little barn is neatly tucked away in the roof of the Great Barn. This room has amazing views over the Great Barn. This room can also be used for remote working, small meetings or as a tech/band break room.



THE MARQUEE

The marquee leads off the terrace, adjacent to the Great Barn. Fully heated and lined with drapes, this space makes a luxurious wet weather contingency for break out sessions and drink receptions.





THE LAWNS

We have plenty of large lawns and parkland surrounding Micklefield with stunning views. Great for outdoor entertainment, team building activities, drinks receptions, lawn games and much more.

We also have a designated helicopter landing area and permission for the use of drones. The only things we don't allow are fireworks and Chinese lanterns



DRESSING ROOM

Our beautiful dressing room is available for use on the day of your event.



With kitchen facilities, shower room and a large dressing room, it gives plenty of space to relax and prepare. Access to the dressing room is from 8am on the day. This room can also be used for remote working, small meetings or as a tech/band break room.





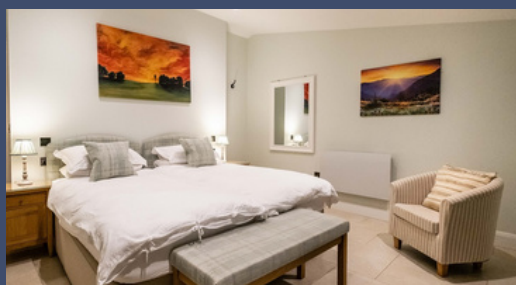
The six bedrooms, beautifully designed in the old cow barn, are named after Anna & Jamie's children, their daughter-in-law and Jamie's dog. Each room was individually decorated by their namesake (though Oly had a little help from Jamie!).

All rooms are double bedrooms, each with a King-sized bed and en-suite bathroom, tea & coffee making facilities, TV and WiFi. Three of the rooms can be changed to twin beds if required.

The rooms are priced at £175 + VAT per room, which includes breakfast in our breakfast room adjacent to the bedrooms.

Check in is from 12.30pm and check out is the following morning by 10am latest. Breakfast is 8.30-9.30am.

If you do not take the rooms, they will remain empty as you have complete exclusivity.



ACCOMMODATION



RECOMMENDED SUPPLIERS

FLORIST



ANDREW FLEMING FLORIST
01923 283 924
info@andrewflemingflorist.co.uk
www.andrewflemingflorist.net

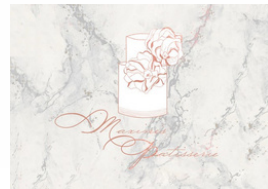


CAKES

EMILY JANE CAKES
01438 820884
emily@emilyjanecakes.co.uk
www.emilyjanecakes.co.uk



MAXINE'S PATISSERIE
07590 055 096
info@maxinespatisserie.co.uk
www.maxinespatisserie.co.uk



CROXLEY CAKES
01923 776 460
sucroxley@outlook.com
www.croxleycakes.co.uk



PHOTOGRAPHERS

SARAH LEGGE
07789 770 537
sarah@sarahleggephotography.co.uk
www.sarahleggephotography.co.uk



LILLY LANE
07722563076
lilylanephotography@outlook.com
www.lilylanephotography.co.uk



POPPY CARTER
07985450729
poppy@poppycarterportraits.com
www.poppycarterportraits.com



LAUREN MARCHANT
07854555284
laurenemilymarchant@gmail.com
laurenmarchantphotography.com



TOASTMASTERS

JANGO
07703 210 600
jango@toastmasterjango.co.uk
www.toastmasterjango.co.uk



RECOMMENDED SUPPLIERS

MAKE-UP ARTISTS

CHARLOTTE GEORGE

07801 842 353

charli.george@gmail.com

www.charlottegeorgemakeup.com

Charlotte George

hair & makeup artist

I LOVE IT LAURA

07939 060 530

lala26@live.co.uk

www.iloveitlaura.co.uk



CHARLIE PEARCY

07876 794 587

charlie@charliepearcy.com

www.charliepearcyweddings.com

CP

WEDDING HAIR & MAKEUP

STATIONERY

LOUPAPER

07525 825 078

info@loupaper.co.uk

www.loupaper.co.uk

Loupaper

VIDEOGRAPHERS

BLOOMSBURY FILMS

08002 346 368

info@bloomsburyfilms.com

www.bloomsburyfilms.com

Bloomsbury  Films®

MUSK PHOTOGRAPHY AND FILMS

natasha@muskphotographyandfilms.com

www.muskphotographyandfilms.co.uk


WEDDING FILMS

CHILDCARE

SAFE AND SOUND EVENTS

020 7965 7343

info@safeandsoundevents.com

www.safeandsoundevents.com

Safe&Sound
BESPOKE CHILDCARE AND FAMILY EVENTS

MOTHER OF THE TRIBE

07917 357960

mother.of.the.tribe@outlook.com

www.facebook.com/mother-of-the-tribe

Mother of the 
TRIBE

ENTERTAINMENT AND BANDS

GUITARIST - THOM MUSIC

07792 916 359

hello@thom-music.com

www.thom-music.com



MAGICIAN

John Bulleid MMC

07739 903 024

johnbulleid@outlook.com

www.johnbulleid.com



ANTHEM MUSIC AGENCY

07734316946

www.anthemmusicagency.co.uk

info@anthemmusicagency.co.uk



SINGING WAITERS AND CHEFS

0207 993 2874

07970 989 141 (Andy)

www.encoreentertainment.co.uk

acts@encoreentertainment.co.uk



CEILIDH BAND

07855 050 778

info@licencetoceilidh.com

www.licencetoceilidh.co.uk



THE BALTIC CEILIDH BAND

07961200225

www.thebigcoolcelts.com

bookings@thebigcoolcelts.com



THE COLLECTIVE BAND

07909 511 013

bookings@thecollectiveband.co.uk

www.thecollectiveband.co.uk



XS SHOWBAND

020 3016 0853

info@xsshowband.com

<https://www.xsshowband.com/>



CREATION SHOW BAND

0208 953 0850

info@creationmusicalservices.co.uk

www.creationmusicalservices.co.uk



THE WEDDING JAR

07720 056 375

theweddingjarmail@gmail.com

www.theweddingjar.co.uk



TOTEM TRIBE

020 8207 4794

hello@totem-tribe.co.uk

www.totem-tribe.co.uk



THE FUNCTION BAND

020 3971 0222

info@thefunction.band

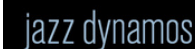
www.thefunction.band



JAZZ DYNAMOS

07973 757 484

www.jazzdynamos.co.uk/party



INCOGNITO ARTISTS

Singing waiters

02072 915 350

hello@incognitoartists.com

www.incognitoartists.com



JEWISH ENCORE

0207 993 2874

07970 989 141 (Andy)

www.encoreentertainment.co.uk

acts@encoreentertainment.co.uk



DJS

YOUR DJ & MORE

07884 961236 - Darryl Green

info@yourdjandmore.com

www.yourdjandmore.com

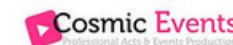


COSMIC EVENTS

01252 961500 - Tom Philpott

info@cosmicdj.co.uk

www.cosmicdj.co.uk



RECOMMENDED SUPPLIERS

SOUND & LIGHTING

THAT EVENT COMPANY

01844 215 857

create@that-event.com

www.that-event.com



ALL SAFE AND SOUND

02083 507 607

info@allsafeandsound.co.uk

www.allsafeandsound.co.uk



CLASSICAL MUSIC

BOWFIDDLE STRINGS

07702 469 736

laura@bowfiddle.org

www.bowfiddle.org



TITANIUM STRINGS

02086 109 186 - Richard Weeden

info@ukmusicmanagement.com

www.titaniumstrings.com

EVENING FOOD

WOODY'S WOOD FIRED PIZZAS

07968 416 343 – Laura

laurajane2017s@gmail.com

www.woodysfiredpizza.co.uk



THE ROCKET OVEN

07845 113073

info@therocketoven.co.uk

www.therocketoven.co.uk



DOUGH AND DEER MOBILE PIZZERIA

07815 864297

info@doughanddeer.co.uk

www.doughanddeer.co.uk



NICK EINHORN MAGICIAN

info@einhorn.co.uk

(0)20 8386 5520



THE BOWLER HATTED MAGICIAN

magic@thebowlerhattedmagician.com

07721 890 434



PHOTOBOOTHS

WOW FACTOR WEDDINGS

07801 579 566

WOW FACTOR

info@wowfactorweddings.co.uk

www.wowfactorweddings.co.uk

MOBILE MOMENTS

02031 519 616

MOBILE MOMENTS

info@mobilemoments.london

www.mobilemoments.london

THE PHOTOBOOTH EXPERIENCE

TRAVEL

Croxley Cars

01923 947 890

www.croxleycars.co.uk



FLEET CARS

01923 771 111

www.fleetminicabs.com



TUDOR AREA CARS

01923 777 666

www.tudorareacars.co.uk



GARDEN GAMES

PURE MINI GOLF

www.pureminigolf.co.uk

Info@pureminigolf.co.uk



DOLLY DIMPLES GAMES

www.dollydimplesweddings.co.uk

DollyDimplesWeddings@hotmail.com



RECOMMENDED SUPPLIERS



LOCAL PLACES TO STAY

CRESTYL COTTAGE

(Self catering cottage for up to 2 people)

01923 265842 - Sarratt

crestylcottage@outlook.com

www.crestylcottage.co.uk

THE CROWN INN

(15 rooms)

01494 721 541 - Amersham

www.thecrownamersham.com

KINGS ARMS

(45 rooms)

01494 725 722 - Amersham

www.kings-arms-hotel.com

THE BEDFORD ARMS

(18 rooms)

01923 283 301 - Chenies

www.bedfordarms.co.uk

THE TWO BREWERS

(20 rooms)

01923 265 266 - Chipperfield

www.chefandbrewer.com

THE GROVE

01923 807 807 - Watford

www.thegrove.co.uk

HARTWELL HOUSE

01296 747 444 - Aylesbury

www.hartwell-house.com



TERMS & CONDITIONS

All music must stop at 11.30pm and must be played through our Barn PA system which compresses sound to 95db. No amplified music from DJs or bands are permitted outside, PA systems for ceremonies and light background music are permitted.

Any changes or installations must be carried out by our contractors. No fireworks, confetti cannons, or Chinese lanterns are permitted.

There is no access to the venue for guests or suppliers before 8am on the day of the event. All equipment/materials must be collected by 10am the following day.

Catering can only be provided by one of our approved caterers. Prices for Kalm Kitchen are all inclusive. For Kosher caterers, there is an additional charge of £2,000+VAT which includes use of our fully equipped kitchens, catering commission and permission for the caterer to supply all drinks and run the bar. These additional charges will be invoiced together with your final balance. Indian caterers will add the kitchen fee of £500 + VAT onto their invoice. Micklefield Hall will run the bar for you after the meal, which can be a free bar or pay bar. Glasses and staff are included in the price of the drinks.

Cancellation - In the event that you cancel your function, for whatever reason, no money is refundable. Cancellation within three months of the date will require payment of the venue fee in full. It is highly recommended that you take out event insurance.

The team at Micklefield Hall are on hand to provide advice and support.



HOW TO FIND US

NB: Navigation will take you the wrong way from jct 18, M25

Our nearest train stations are Chorleywood or Rickmansworth
(main line from Marylebone or Underground Metropolitan Line)

Via M25 Clockwise

Exit jct 18, turn left towards Chorleywood

Proceed past garage to traffic lights 1/4 mile.

Turn right down Solesbridge Lane.

Proceed down the hill, over the motorway & up the hill.

DO NOT take first right into Sarratt Lane but proceed to T-junction.

Turn right into Sarratt Road and the front gates to Micklefield are
on your right after 1/4 mile at first left hand bend.

Large wrought iron black gates, Lower Lodge at bottom of drive

Via M25 Anti- Clockwise

Exit at jct 20 and take A41 toward Watford.

Turn right at traffic lights after 1/3 mile, signed 'Sarratt'
(immediately after Langleybury Church).

Proceed for 3 1/2 miles to T-junction.

Turn right into Sarratt Road towards Sarratt.

Micklefield Hall is the first place on your left after 1/2 mile.

Large wrought iron black gates, lower lodge at bottom of the drive.

Via M1 (from London)

Exit at jct 5.

Take 3rd exit A41 North.

Straight on, at roundabout (2nd exit) by ASDA and proceed on dual
carriage way under bridge to large roundabout at Hunton Bridge.

Keep in right hand lane and take 3rd exit, still on A41 towards Aylesbury.

After 1/4 mile, turn left at Traffic lights signed 'Sarratt'. Proceed for 3
1/2 miles to T-junction. Turn right into Sarratt Road towards Sarratt.

Micklefield Hall is the first place on your left after 1/2 mile.

Large wrought iron black gates, Lower Lodge at the bottom of the drive.





MICKLEFIELD HALL

THE PERFECT COUNTRY WEDDING VENUE



For more information or to arrange a viewing contact the Micklefield Hall Team:

info@micklefieldhall.com

01923 778898

Sarratt Road, Sarratt, Rickmansworth, Hertfordshire, WD3 6AQ

www.micklefieldhall.com

Follow us on Social Media

Instagram: @micklefieldhall

Facebook: @micklefieldhall

With a very special thanks to Sarah Legge Photography & Jack Ladenberg Photography for the use of their stunning photos in our brochure.

E&O.E Sept 2023 // Brochure version 28092023OD



MICKLEFIELD HALL

THE PERFECT COUNTRY VENUE