

NM

2027





Micklefield Hall is the ideal setting for your wedding. An exquisite venue, just 25 miles from Central London

Micklefield Hall is set in 350 acres of rolling Hertfordshire countryside. Managed by Jamie & Anna Rankin who live in the manor house, together with their children, they ensure that this elegant venue has a wonderful family feel.

Micklefield conjures up a mix of total privacy, exclusivity and efficiency which, when combined with the truly magical setting, makes it the perfect venue.

The Great Barn looks out over magnificent gardens with distant views and enjoys a convenient location just two miles from the Chorleywood exit (Jct 18) of the M25.

Every wedding at Micklefield Hall is tailor-made to suit your requirements, making your day truly unique.

The Great Barn and the extensive gardens are yours exclusively for the day.





WEDDINGS AT MICKLEFIELD HALL

2027

All weddings at Micklefield take place in the The Great Barn. We have several areas for Civil Ceremonies including: The Great Barn, Garden Room, Orangery, Main Lawns and the Temple by the pond are all licensed to hold a Civil Ceremony.

Our venue fees (excluding VAT) for up to 200 guests are:

2027	May-Sept	Apr & Oct	Jan, Feb, Mar, Nov & Dec
Saturday & Sunday	£14,750	£13,750	£9,750
Friday	£13,750	£12,750	£8,750
Thursday	£12,000	£11,000	£8,000
Monday-Wednesday	£8,500	£8,000	£6,750
Bank Holidays	£13,750	£12,750	£8,750

(24th December to 1st January and Easter excluded)

The Great Barn and gardens are made available for your special day. Included within the fee are the facilities such as lighting, toilets, catering area, tables, chairs, dance floor, stage and sound system. If you would like to hold two ceremonies on the same day (i.e. a civil ceremony followed by a religious ceremony) then there will be an extra ceremony fee of £1,500 +VAT in addition to our venue fee.



YOUR CEREMONY

The Great Barn offers a beautiful backdrop for your Civil or Religious ceremony for up to 200 guests, although you may want to use one of our outside ceremony areas if weather permits.

REGISTRY OFFICE

0300 123 4045

registrars.admin@hertfordshire.gov.uk

www.hertsdirect.org/registrars

HUMANIST CEREMONIES

Ginny Collins (Officiant/ Celebrant)

01306 509087 / 07745 379428

gincoll@aol.com

www.humanist.org.uk/ginnycollins

INDEPEDENT CELEBRANT

Charlotte Roscow

07747137845

charlotte@charlotteroscow.co.uk

<https://www.charlotteroscow.co.uk/>

INDEPENDENT CELEBRANT

Bernadette French

01442 266760 / 07964358583

preciousmomentsceremonies@gmail.com

<https://www.bernadettefrench.co.uk/>

GAYATRI WEDDING & EVENTS

Chirag Chavda 07956 334 271

sales@gayatriweddings.com

www.gayatriweddings.com

WED IN STYLE

0208 426 1411

www.wed-in-style.co.uk

info@wed-in-style.co.uk

LOCAL VICAR

Sarratt & Chipperfield Church

Vicarage - 01923 265848

Benefice Office - 01923 264377

rector.hcsp@gmail.com

www.hcsp.net





OUR CATERING PARTNER



An introduction to Kalm Kitchen



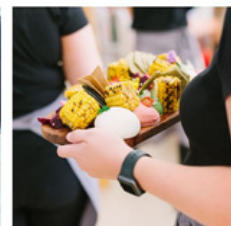
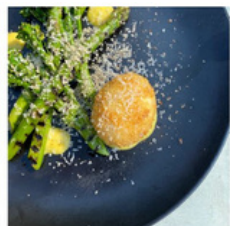
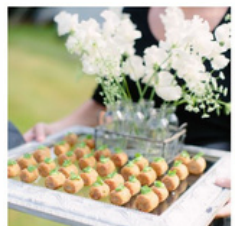
Founded in 2008 by James and Jen Middlehurst, Kalm Kitchen have been planning and delivering weddings at Micklefield Hall for 14 years and are highly respected caterers in the wedding world.



James, an outstanding chef, trained at the Tante Marie Culinary Academy and, with an eye for style, Jen provides the creative flair and passion that's at the heart of Kalm Kitchen. A winning combination!



2025/2026	Jan-Mar	Apr	May-Sept	Oct	Nov	Dec
Monday - Friday	£64 + VAT	£69 + VAT	£72 + VAT	£69 + VAT	£64 + VAT	£69 + VAT
Saturday & Sunday	£64 + VAT	£72 + VAT	£72 + VAT	£72 + VAT	£72 + VAT	£72 + VAT



Once you have booked your wedding with Micklefield Hall, please contact Kalm Kitchen who will provide you with menu options, talk you through your ideas and put together a bespoke quotation:

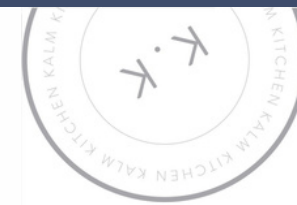
www.kalmkitchen.co.uk

info@kalmkitchen.co.uk

01483 813 360

- For a minimum of 80 guests, the Kalm Kitchen package price includes:
- A selection of four canapés followed by a three-course wedding breakfast
 - Fine white bone china, all cutlery and glassware and white table linen
 - A tasting for two to sample and decide on your menu
 - A range of dietary options for starter, main course and dessert
 - A selection of fresh, rustic breads
 - Water jugs for each table

Kalm Kitchen offer a wide range of optional extras to align with your wedding day vision. From grazing stations for your drinks reception, to a sharing antipasti starter and a patisserie dessert bar. Kalm Kitchen can also accommodate linen, glassware and crockery upgrades to suit your wedding decor.





OUR ALTERNATIVE CATERING PARTNERS

If you require specialised caterers, you must use one from our approved list and the costs will vary. Different kitchen fees will apply for both Asian and Kosher caterers, listed in our terms and conditions.



RAGASAAN

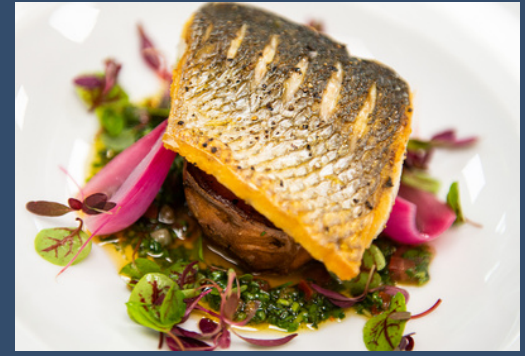
020 8839 0880 - Arun / Nina
sales@ragasaan.com
www.ragasaan.com



TONY
PAGE

TONY PAGE

0208 830 4000
charlotte@tonypage.com
www.tonypage.com



PHILIP SMALL
CATERERS AND EVENT PLANNERS

PHILIP SMALL

0208 200 5666
info@philipsmall.co.uk
www.philipsmall.co.uk



BENJY LEVEY

020 3772 0811
benjy@eatmeevents.com
www.eatmeevents.com



JAMES A. ZIMMER

JAMES A ZIMMER

0208 830 8330
events@jameszimmer.co.uk
www.jameszimmer.co.uk



TASTE
MARC SHARER

MARC SHARER

01707644000
marc@marcsharer.com
www.marcsharer.com





DRINKS PACKAGES

There are two options you can select from for your event:

Option 1. An unlimited drinks package:

£35 + VAT pp (includes the Prosecco, Cremant, Cava and any wine £16+VAT and under from our wine list)
£40 + VAT pp (includes the Quercus, Champagne and any wine from our wine list)

Select one sparkling, beer and soft drink for your 1.5 hour drinks reception.

Select one white, red and rose wine for your dinner - Your beer and soft drink selection will be served on request.

Select one sparkling for your toast drink with the speeches.

Option 2. Pay on Consumption

Pay at the end of the event for only what has been consumed during the drinks reception and dinner.

Select the sparkling, beer and soft drink for your 1.5 hour drinks reception.

Select one white, red and rose wine for your dinner - Your beer and soft drink selection will be served on request.

Select one sparkling for your toast drink, if you wish.

Beer options:

Peroni/corona/budweiser £5
Bulmers or kopparberg cider £6
Old speckled hen or doombar ale.

Soft drink options:

Orange juice or elderflower cordial £6 per jug

Please note, all prices listed are excluding VAT & are subject to any further duty increase or extreme currency fluctuations. E&O.E June 2023



EVENING BAR

After your meal the Micklefield Hall bar is open where we serve the usual range of alcoholic and non alcoholic drinks. We can hold a tab behind the bar or operate a pay bar.

SOFT DRINKS

Coke, Diet Coke, Lemonade, Fruit Juice, Soda Water, Sparkling water & Elderflower cordial £3.00/glass
Ginger Beer/Ale, Tonic, Light Tonic £3/glass
Punchy non-alcoholic cocktails & Red Bull £3.50/can

BEER/ALE £5.

Peroni, Budweiser, Corona £5/bottle
Draught: Beavertown Neck Oil £7/pint
Guinness, Old Speckled Hen, DoomBar £6/bottle
Koppaberg, Bulmers £6/bottle
o% Peroni £5/bottle

WINE

Glass of wine sml £6 / lrg £8 / Bottle £20
Glass of Prosecco £7 / Bottle £22
Glass of Champagne £9 / Bottle 37

SPIRITS

Classic spirit single shot £4
Classic spirit double shot £6
Gordons, Bombay Sapphire, Seedlip Garden, Smirnoff, Captain Morgan, Jameson, Jonnie Walker, Jack Daniels, Jägermeister, Disaronno, Baileys, Tequila, Sambuca, Archers, Tequila Rose, Pimms, Southern Comfort, Bacardi, Malibu,
Premium spirits single shot £5
Premium spirit double shot £7

Tanqueray, Hendricks, Grey Goose, Courvoisier, Bulleit Frontier, Glenmorangie
Jägerbombs £5
Vodka & Red Bull £7

MICKLEFIELD HALL WINE LIST 2025

<u>Price</u>	<u>Sparkling & Champagne</u>	<u>Region</u>
£17.00	Prosecco DOC, Serenello Extra Dry	Italy 11%
£17.00	Barocco Prosecco Spumante Extra Dry Rose NV (V) (Vg)	Italy 10.5%
£21.00	Cremant de Bourgogne Brut, Leonce Bocquet	France 12.5%
£17.00	Portaceli Brut Cava (V) (Vg)	Spain 11.5%
£28.00	Micklefield Hall Quercus, Classic Cuvee (V)	England 11.5%
£31.00	Esterlin Brut Eclat, NV	Champagne 12%
£34.00	Champagne Castelnau Brut NV (V) (Vg)	Champagne 12.5%
	<u>White Wine</u>	
£14.00	Jardins de Gascogne Blanc Plaimont (V) (Vg)	France 11%
£17.50	Bericanto Pinot Grigio, DOC (V) (Vg)	Italy 12.5%
£18.50	Il Portino Gavi (V) (Vg)	Italy 12.5%
£16.50	Wairau River Estate Sauvignon Blanc, Marlborough (V) (Vg)	N. Zealand 12.5%
£16.00	Loureiro, Vinho Verde, AB Valley (V) (Vg)	Portugal 11.5%
£16.50	Chardonnay De Wetshof Estate Bon Vallon Sur Lie (V) (Vg)	S. Africa 14%
£18.50	Sauvignon Blanc, L'Artiste	Loire 12.5%
£16.50	Pazo de Mirasoles Albarino Bodegas Parra Jimenez (V) (Vg)	Spain 11%
£16.00	Marsanne Viognier Roche de Belanne, Languedoc	France 12.5%
	<u>Red Wine</u>	
£15.00	Franschoek Cellar The Old Museum Merlot (V) (Vg)	S. Africa 14%
£15.00	Carignan, Vieilles Vignes, Roche de Belanne (V) (Vg)	France 13%
£16.00	Primitivo Puglia 'Secondo Piano' (V) (Vg)	Italy 13%
£14.00	El Dueto Pinot Noir (V) (Vg)	Chile 13%
£18.50	Familia Schroeder 'Saurus' Patagonia Select Malbec (V)	Argentina 14%
£14.50	Impressionist Shiraz (V) (Vg)	Australia 13.5%
£16.00	Vignamadre Dega Bio Montepulciano D'Abuzzo Doc (V) (Vg)	Italy 13%
£18.00	Rioja Reserva, Azabache, Bodegas Aldeanueva (V) (Vg)	Spain 14%
	<u>Rosé Wine</u>	
£20.00	Chemin Provence Rose Coteaux d'Aix-en-Provence	France 12%
£18.00	Chateau de Fonscolombe Rose Coteaux d'Aix-en-Provence (V)	France 13%
£16.00	Tempus Two Silver Series Rose	Australia 11%

Please note, all prices listed are excluding VAT & are subject to any further duty increase or extreme currency fluctuations.





MICKLEFIELD HALL QUERCUS CLASSIC CUVÉE



In 2023, Anna and Jamie embarked on a project to develop a sparkling wine for Micklefield Hall. With the help of Jodie Newman (our fabulous label designer) Quercus was born.

We wanted the wine label to reflect the most precious asset of Micklefield, our Temple. Nestled in the gardens, overlooking the round pool and shaded by the 450 year old oak tree, the Temple bears witness to many special marriage ceremonies.

The name Quercus was chosen as it is the Latin for Oak and a special illustration was commissioned to capture the classic architecture of the Temple, the ripples of the pond and shelter from the oak leaves.

The Classic Cuvée is cultivated, blended and bottled on the fringes of the Ashdown Forest. Produced in the traditional method (like Champagne), this English fizz is fragrant and floral on the nose, tastes of orange zest, citrus, white blossom and fresh green apples and dances around your mouth with it's creamy moose and crisp, fresh acidity.

Add our Micklefield Hall Quercus to your drinks reception or as a special toast drink.

DRINKS CART



A timeless and classic drinks cart to quench your guests thirst as they arrive, with a choice of alcoholic or soft options: Apple sparkle, elderflower sparkle, cloudy lemonade, orange sparkle, Gordons dry and pink gin & tonic cans, bottled beer.

Hire this option for: **£100 + VAT**

Drinks will be charged on consumption.

Alcoholic and non-alcoholic options available.

THE PIMMS BAR



A perfect addition to your drinks reception is the iconic Pimms station. This will include a waitress, garnishes and glassware, to look picture perfect on the main lawn, terrace or in the orangery.

Hire this option for: **£150 + VAT**

Pimms will be included in the drinks package price, or pay on consumption at £18 per jug

THE COCKTAIL BAR



Choose your cocktails from our menu of six: Lychee martini, negroni, mojito, espresso martini, old fashioned, passionfruit martini. Each cocktail is expertly blended by Edmunds and shaken and poured by our team at our stylish cocktail bar.

Hire this option for: **£150 + VAT**

Drinks are paid for on consumption.

All cocktails are £8 each.

CHANDON GARDEN SPRITZ



A lovely addition to your drinks reception, this unique blend made with natural extracts from orange peels, herbs and spices. A delicious top-quality dry cuvée, made with Chardonnay, Pinot Noir and Semillon grapes, finished with a sprig of rosemary and dried orange.

Add this option to your drinks package for:

£3 per person or

£28 per bottle on a consumption basis.

THE WHISKY BAR



Travel around the world of whiskys with our expert mixologist. You'll find our Whisky Bar by the crackling fire from 7pm-11pm, with a carefully curated selection of whiskies, garnishes and even the option of a smoked whisky.

Hire this option for: **£250 + VAT**

Drinks will be charged on consumption.

Whisky prices may vary.

THE BUBBLY BAR



The Bridal Suite is the perfect place for the our Bubbly Bar! Add your choice of juice and fruit to your prosecco and enjoy whilst you get ready for the big day with all your girls! Alternatively, add this bar to your drinks reception for guests to enjoy!

Hire this option for: **£120 + VAT**

To include set-up, juices, fruit and ice bucket.

Drinks are paid for on consumption.

YOU PERSONAL MIXOLOGIST



Why not have your very own mixologist for the night (from 7pm-11pm) to indulge your guests with freshly prepared cocktails from our carefully picked menu - All our cocktails are made by an expert mixologist, using fresh ingredients and beautiful garnishes.

Hire this option for: **£200 + VAT**

Drinks are paid for on consumption.

All cocktails are £10-£12 each.

HOT CHOCOLATE BAR



Fancy a hot chocolate by the fire in the evening? Our hot chocolate bar is the perfect addition to your evening reception and adds something a little bit different for your guests!

Hire this option for **£150 + VAT**

Hot chocolates are £2.50 per serving.

(option to add an alcoholic shot for an additional £3 per drink)



THE BRIDAL SUITE

Our beautiful Bridal Suite is the perfect place for the Bridal party (or the Groomsmen) to get ready.

With kitchen facilities, shower room and a large dressing room, it gives plenty of space to relax, pamper and prepare for the big day.

Access to the Bridal Suite is from 8am on the day of the wedding.



THE GROOM'S ROOM

Our Groom's room is neatly tucked away in the roof of the Great Barn. Far enough away from the Bridal Suite so that parties don't see each other before the big moment.

The Grooms Room has amazing views over the Great Barn and plenty of space for all to get ready.



THE BAR

Our bar area is adjacent to the Great Barn, divided by large glass panels. Fully stocked with all your usual favourites and some local and interesting additions.

We have several options for our bar service which are detailed in our drinks package section of the brochure.

If you have a particular favourite drink that we don't usually stock, please let us know as we may be able to supply it for you.



THE LAWNS

We have plenty of large lawns and parkland surrounding Micklefield with stunning views. Great for outdoor drinks receptions and photos.

We also have a designated helicopter landing area and permission for the use of drones. The only things we don't allow are fireworks, confetti canons, Chinese lanterns and amplified music.



THE ORANGERY

The Orangery leads off the terrace, adjacent to the Great Barn. A stunning space with floods of natural light and fire place. A luxurious wet weather contingency for break out sessions and drink receptions.



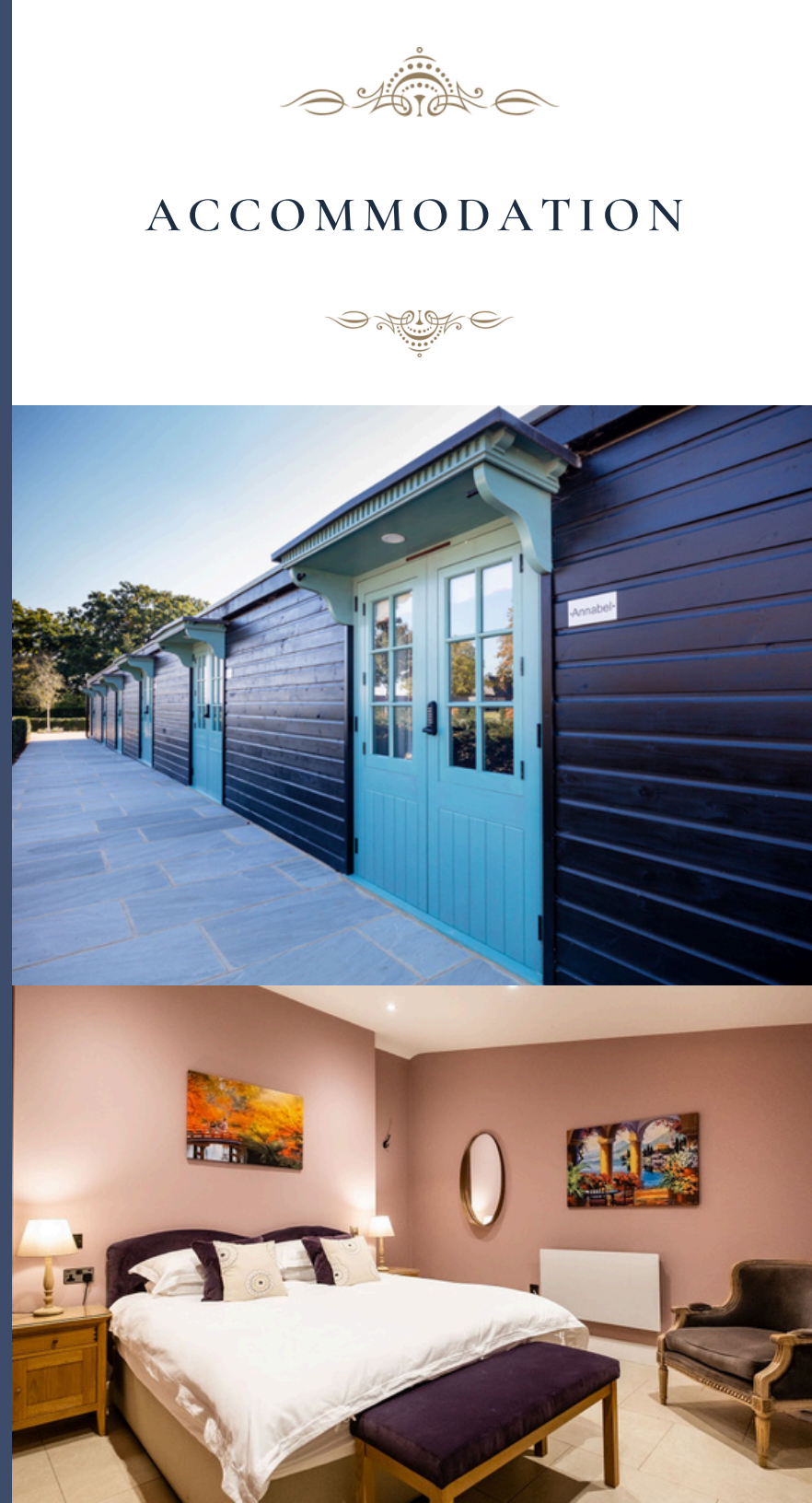
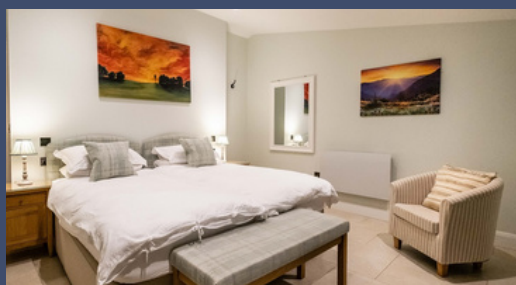
The six bedrooms, beautifully designed in the old cow barn, are named after Anna & Jamie's children, their daughter-in-law and Jamie's dog. Each room was individually decorated by their namesake (though Oly had a little help from Jamie!).

All rooms are double bedrooms, each with a King-sized bed and en-suite bathroom, tea & coffee making facilities, TV and WiFi. Three of the rooms can be changed to twin beds if required.

The rooms are priced at £175 + VAT per room, which includes breakfast in our breakfast room adjacent to the bedrooms.

Check in is from 12.30pm and check out is the following morning by 10am latest. Breakfast is 8.30-9.30am.

If you do not take the rooms, they will remain empty as you have complete exclusivity of the venue.



ACCOMMODATION



RECOMMENDED SUPPLIERS

FLORIST

ANDREW FLEMING FLORIST

01923 283 924

info@andrewflemingflorist.co.uk

www.andrewflemingflorist.net



THE FLOWER SHACK

0747 5341745

Instagram: @theflowershack_uk

theflowershackshaan@gmail.com



POPPY AND PEONY

www.poppyandpeonyflorist.co.uk

poppyandpeonyflorist@hotmail.com



STATIONERY

LOUPAPER

07525 825 078

info@loupaper.co.uk

www.loupaper.co.uk



PHOTOGRAPHERS

SARAH LEGGE

07789 770 537

sarah@sarahleggephotography.co.uk

www.sarahleggephotography.co.uk



LILY LANE

07722563076

lilylanephotography@outlook.com

www.lilylanephotography.co.uk



KRISTEN KATE PHOTOGRAPHY

07526408747

kristenkatephotography@gmail.com

www.kristenkatephotography.com



VLA - JON & LAURA

07798630334

hello@vla-photography.co.uk

www.vla-photography.co.uk/



TOASTMASTERS

JANGO

07703 210 600

jango@toastmasterjango.co.uk

www.toastmasterjango.co.uk



RECOMMENDED SUPPLIERS

MAKE-UP ARTISTS

CHARLOTTE GEORGE

07801 842 353

charli.george@gmail.com

www.charlottegeorgemakeup.com

Charlotte George

hair & makeup artist



SALLY RICEMAN

07779305006

info@sallyriceman.com

www.sallyriceman.com

SALLY RICEMAN

Wedding Hair & Make-up

AMBER HARLOW

07795 320190

amberharlowmakeup@hotmail.com

www.amberharlowmakeup.com



CJC HAIR AND MAKE UP

hello@cjchairandmakeup.com

www.cjchairandmakeup.com



GARDEN GAMES

CASPAR'S PARTY GAMES

07790423827

www.casparspartygames



CAKES

BLOOM AND CRUMB

hello@bloomandcrumb.co.uk

www.bloomandcrumb.co.uk/



PANACHE CAKE DESIGN

07814 854 825

iasha@panachecakedesign.com

www.panachecakedesign.com/



Luxury & Contemporary Wedding Cake Design

VIDEOGRAPHERS

MUSK PHOTOGRAPHY AND FILMS

natasha@muskphotographyandfilms.com

www.muskphotographyandfilms.co.uk



MAVERICK WEDDINGS

07895380169

info@maverickweddings.co.uk

www.maverick-weddings.co.uk/

Maverick Weddings
— Film/Photo —

ENTERTAINMENT AND BANDS

BANDS

THE COLLECTIVE BAND

07909 511 013

bookings@thecollectiveband.co.uk

www.thecollectiveband.co.uk



XS SHOWBAND

020 3016 0853

info@xsshowband.com

<https://www.xsshowband.com/>



TOTEM TRIBE

020 8207 4794

hello@totem-tribe.co.uk

www.totem-tribe.co.uk



THE FUNCTION BAND

020 3971 0222

info@thefunction.band

www.thefunction.band



THE BRASS FUNKEYS

07732 407491

www.brassfunkeys.com

brassfunkeys@gmail.com



DJS

COSMIC EVENTS

01252 961500 - Tom

info@cosmicdj.co.uk

www.cosmicdj.co.uk



YOUR DJ & MORE

07884 961236 - Darryl

info@yourdjandmore.com

www.yourdjandmore.com



PARAGON ROADSHOW

0208 606 9636

info@paragonmusic.co.uk

www.paragonroadshow.com/



ENTERTAINMENT

THE BOWLER HATTED MAGICIAN

07721 890 434

magic@thebowlerhattedmagician.com

www.thebowlerhattedmagician.com



INCOGNITO ARTISTS

02072 915 350

hello@incognitoartists.com

www.incognitoartists.com



MUSICIANS

CELESTIAL STRINGS LDN

07867 815301

www.celestialstringsldn.co.uk

hello@celestialstringldn.co.uk



GUITARIST - THOM MUSIC

07792 916 359

hello@thom-music.com

www.thom-music.com



VALERIA CLARKE - HAPIST

07805103216

valeria@valeriaclarke.com

www.valeriaclarke.com



MARJU VIOLIN

marjuviolin@hotmail.com

www.marjuviolin.com



PIANO WITH BHAV

07954416243

pianowithbhav@hotmail.com

www.eternity-uk.com/supplier

[/piano-with-bhav/](http://piano-with-bhav/)



RECOMMENDED SUPPLIERS

DJS

PHOTOBOOTHS

MOBILE MOMENTS MOBILE MOMENTS
THE PHOTOBOOTH EXPERIENCE

02031 519 616

info@mobilemoments.london

www.mobilemoments.london

JUST SMILE

01923 750525

info@justsmile.co.uk

www.justsmile.co.uk/photo-booth-hire/



EVENING FOOD

DOUGH AND DEER MOBILE PIZZERIA

07815 864297

info@doughanddeer.co.uk

www.doughanddeer.co.uk



SPITTING PIG

01442 385564

sales@spittingpighertfordshire.co.uk

www.spittingpighertfordshire.co.uk



TRANSPORT

CROXLEY CARS

01923 882221

FLEET CARS

01923 771111

PRODUCTION

ALL SAFE AND SOUND

02083 507 607

info@allsafeandsound.co.uk

www.allsafeandsound.co.uk



THAT EVENT COMPANY

01844 215 857

create@that-event.com

www.that-event.com



WHITE PRODUCTION

01733 560030

info@whitepd.com

www.white-production.co.uk



CARE

SAFE AND SOUND

020 7965 7343

info@safeandsoundevents.com

www.safeandsoundevents.com



FUR REAL UK

07504020949

fur.realuk22@gmail.com

www.furrealuk.com



PLACES TO STAY

CRESTYL COTTAGE

(Self catering cottage for up to 2 people)

01923 265842 - Sarratt

www.crestylcottage.co.uk

THE GROVE

01923 807 807 - Watford

www.thegrove.co.uk

THE TWO BREWERS

(20 rooms)

01923 265 266 - Chipperfield

www.chefandbrewer.com

BEDFORD ARMS

(14 rooms)

01923 283301 - Chenies

bedfordarms@youngs.co.uk

THE CROWN INN

(15 rooms)

01494 721 541 - Amersham

www.thecrownamersham.com

KINGS ARMS

(45 rooms)

01494 725 722 - Amersham

www.kings-arms-hotel.com

TERMS & CONDITIONS

All music must stop at 11.30pm and must be played through our Barn PA system which compresses sound to 95db. No amplified music from DJs or bands are permitted outside, PA systems for ceremonies and light background music are permitted.

Any changes or installations must be carried out by our contractors. No fireworks, confetti cannons, or Chinese lanterns are permitted.

There is no access to the venue for guests or suppliers before 8am on the day of the event. All equipment/materials must be collected by 10am the following day.

Catering can only be provided by one of our approved caterers. Prices for Kalm Kitchen are all inclusive. For Kosher caterers, there is an additional charge of £2,000+VAT which includes use of our fully equipped kitchens, catering commission and permission for the caterer to supply all drinks and run the bar. These additional charges will be invoiced together with your final balance. Indian caterers will add the kitchen fee of £500+ VAT onto their invoice.

Micklefield Hall will run the bar for you after the meal, which can be a free bar or pay bar. Glasses and staff are included in the price of the drinks.

For religious ceremonies (e.g. Chuppah, Mandap), it is advised that a suitable PA system is hired through a DJ or audio supplier where the ceremony takes place outside. Where there are two ceremonies held on the day of your wedding, an extra ceremony charge of £1,500+VAT will be added to the venue fee.

To secure a date, we require a £2,000+VAT deposit. This and all other venue fee payments are to be paid via BACS or cheque, we don't accept credit cards. We recommend you take out wedding insurance before paying your deposit.

Cancellation - In the event that you cancel your wedding, for whatever reason, no money is refundable. Cancellation within three months of the date will require payment of the venue fee in full.

The team at Micklefield Hall are on hand to provide advice and support.

E&O.E August 2025 // Brochure version 190825LWJL



HOW TO FIND US

NB: Navigation will take you the wrong way from jct 18, M25

Our nearest train stations are Chorleywood or Rickmansworth
(main line from Marylebone or Underground Metropolitan Line)

Via M25 Clockwise

Exit jct 18, turn left towards Chorleywood

Proceed past garage to traffic lights 1/4 mile.

Turn right down Solesbridge Lane.

Proceed down the hill, over the motorway & up the hill.

DO NOT take first right into Sarratt Lane but proceed to T-junction.

Turn right into Sarratt Road and the front gates to Micklefield are
on your right after 1/4 mile at first left hand bend.

Large wrought iron black gates, Lower Lodge at bottom of drive

Via M25 Anti- Clockwise

Exit at jct 20 and take A41 toward Watford.

Turn right at traffic lights after 1/3 mile, signed 'Sarratt'
(immediately after Langleybury Church).

Proceed for 3 1/2 miles to T-junction.

Turn right into Sarratt Road towards Sarratt.

Micklefield Hall is the first place on your left after 1/2 mile.

Large wrought iron black gates, lower lodge at bottom of the drive.

Via M1 (from London)

Exit at jct 5.

Take 3rd exit A41 North.

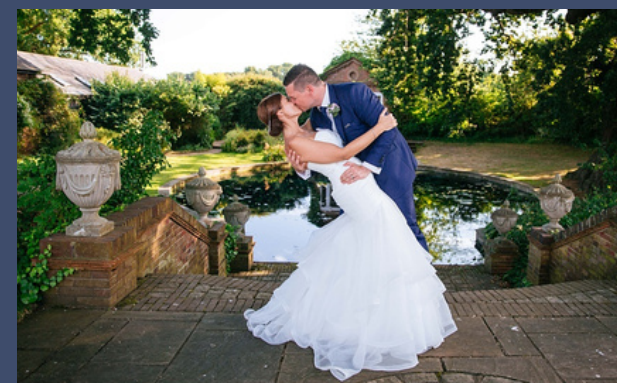
Straight on, at roundabout (2nd exit) by ASDA and proceed on dual
carriage way under bridge to large roundabout at Hunton Bridge.

Keep in right hand lane and take 3rd exit, still on A41 towards Aylesbury.

After 1/4 mile, turn left at Traffic lights signed 'Sarratt'. Proceed for 3
1/2 miles to T-junction. Turn right into Sarratt Road towards Sarratt.

Micklefield Hall is the first place on your left after 1/2 mile.

Large wrought iron black gates, Lower Lodge at the bottom of the drive.





MICKLEFIELD HALL

THE PERFECT COUNTRY WEDDING VENUE

For more information or to arrange a viewing contact the Micklefield Hall Team:

info@micklefieldhall.com

01923 778898

Sarratt Road, Sarratt, Rickmansworth, Hertfordshire, WD3 6AQ

www.micklefieldhall.com

Follow us on Social Media Instagram: @micklefieldhall Facebook: @micklefieldhall

With a very special thanks to Sarah Legge Photography for the use of their stunning photos in our brochure.



MICKLEFIELD HALL
NM
ENGLAND